

2022

# GRF Board Working for Rossmoor

Meeting Agenda Items:

Water Conservation

Fire Mitigation

---

**Congressman  
DeSaulnier**

---

CA Assemblymember  
Bauer-Kahan

---

CA State Senator Glazer

---

Walnut Creek City Council  
Member Silva

---

Contra Costa County  
Supervisor Andersen

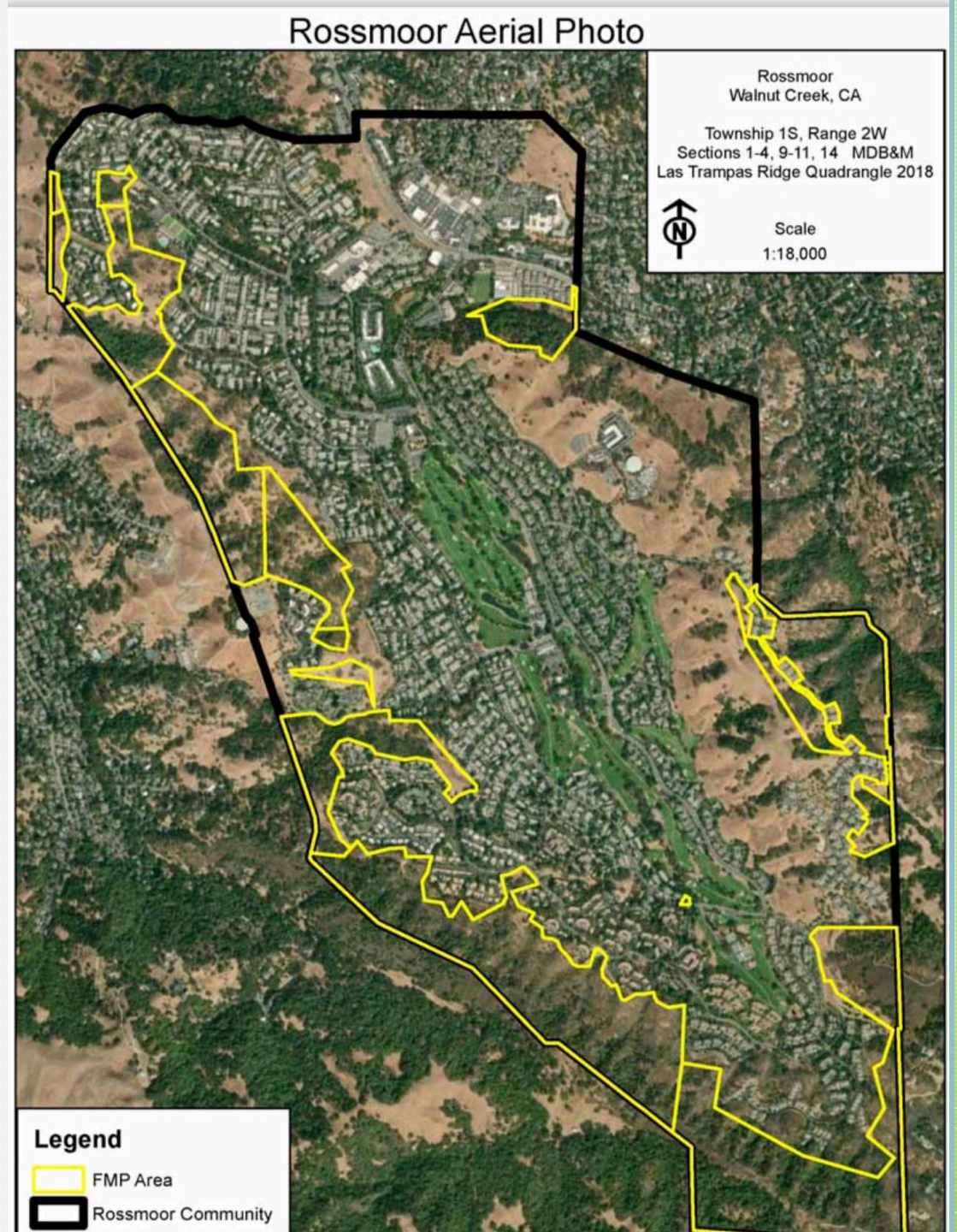


# Water Conservation

- Feasibility study for water reclamation underway for 152 acres of golf course
- EBMUD's drought restrictions may cut off water to golf courses jeopardizing temporary refuge/assembly areas
- Water reclamation for golf courses estimated to cost over \$11 million and subject to multiple interagency approvals

# FIRE MITIGATION Forest Management Plan

- Bordered by thousands of acres of open space parcels including East Bay Regional Park District, EBMUD and private.
- Approx. 3,000 feet of overhead powerlines running through FMP (Forest Management Plan) area.
- Special care is needed to make Rossmoor extremely fire safe

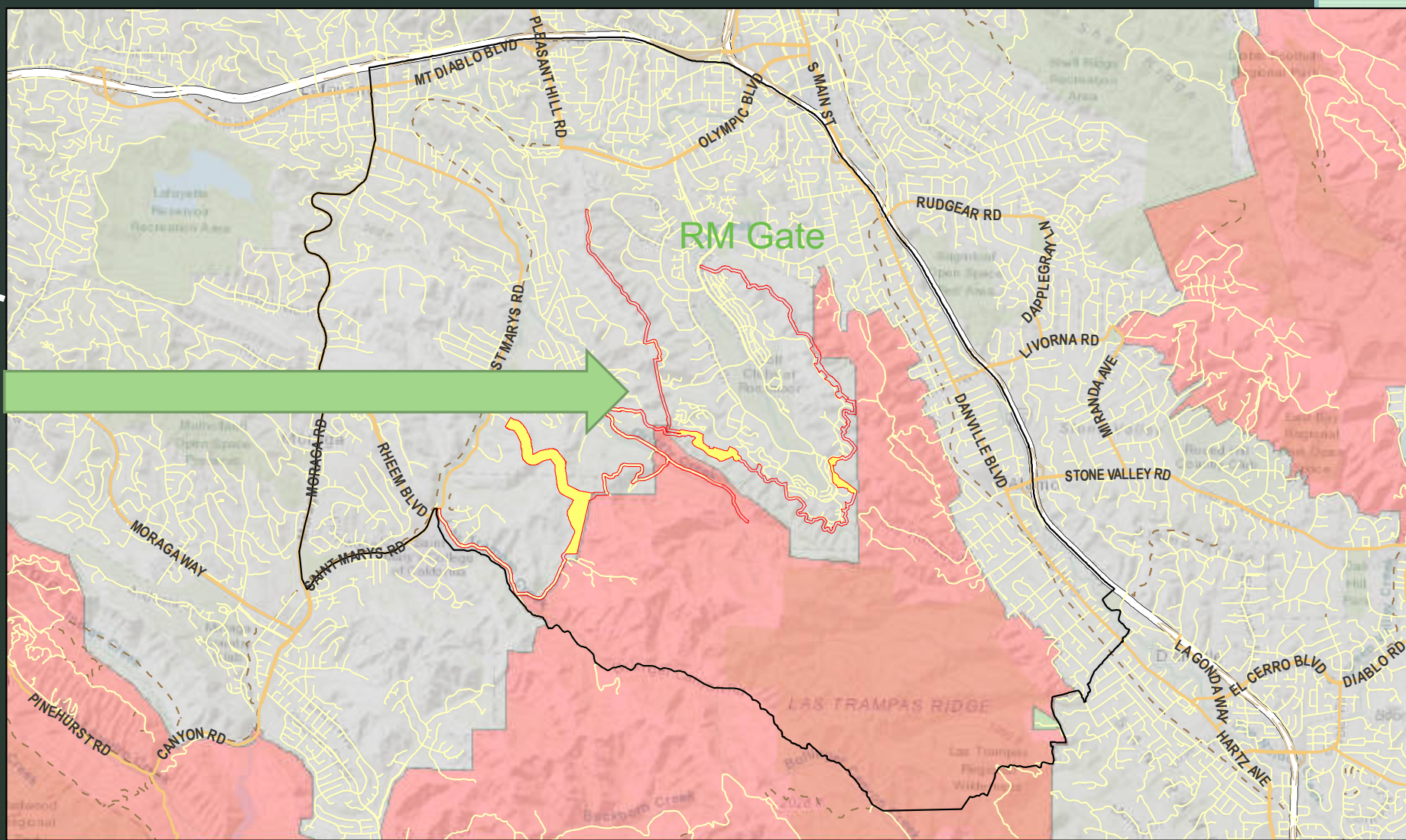


## Goal is Wildfire Resilience in 449 Acres of Forest Management Plan (FMP) Area

- Manage forested ecosystem for a fire resilient landscape focused on 449 acres
- Save lives, protect homes and benefit wildlife
- Forest Management Plan projects activities can provide jobs for local operators, reduce fuels that lead to catastrophic wildfires and avoid expensive fire fighting or rebuilding.
- Failing to implement FMP projects threatens the greater Walnut Creek/Rossmoor Community, as well as neighboring Lafayette and Alamo

# ConFire Working for Rossmoor







\$4.9M grant application to CAL FIRE

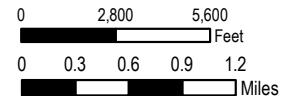


1:65,000

## Lafayette/Walnut Creek Shaded Fuel Break

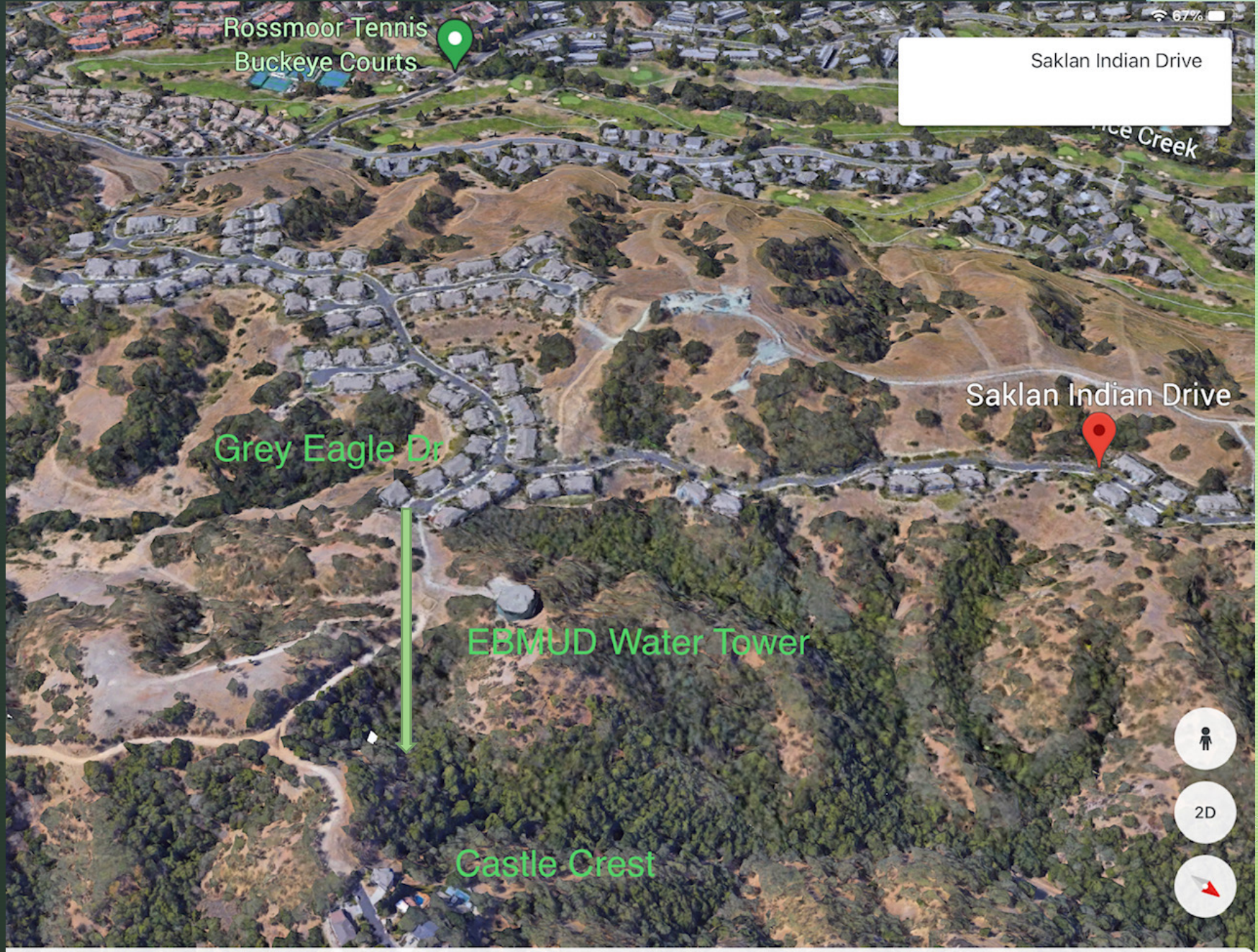
Project Tracking Number: 21-FP-SCU-0232

- |   |  |   |
|---|--|---|
|  | Project Influence Zone<br>(13,814 acres) | Responsibility Area   |
|  | Fuel Break Area<br>(250 acres)           |  Federal |
|  | Grazing Lands                            |  Local   |
|   |  |  State   |



Service Layer Credits: Sources: Esri, HERE, Garmin, Intermap, increment P Corp., GEBCO, USGS, FAO, NPS, NRCAN, GeoBase, IGN, Kadaster NL, Ordnance Survey, Esri Japan, METI, Esri China (Hong Kong), (c) OpenStreetMap

ConFire  
Proposed  
Evacuation  
Road (on hold  
pending easement)



# GRF and ConFire are working for You!

Now it's important  
that you are working  
for you

Follow EPO  
guidelines and be  
prepared when a  
disaster or  
emergency occurs

**You're On  
Your Own**